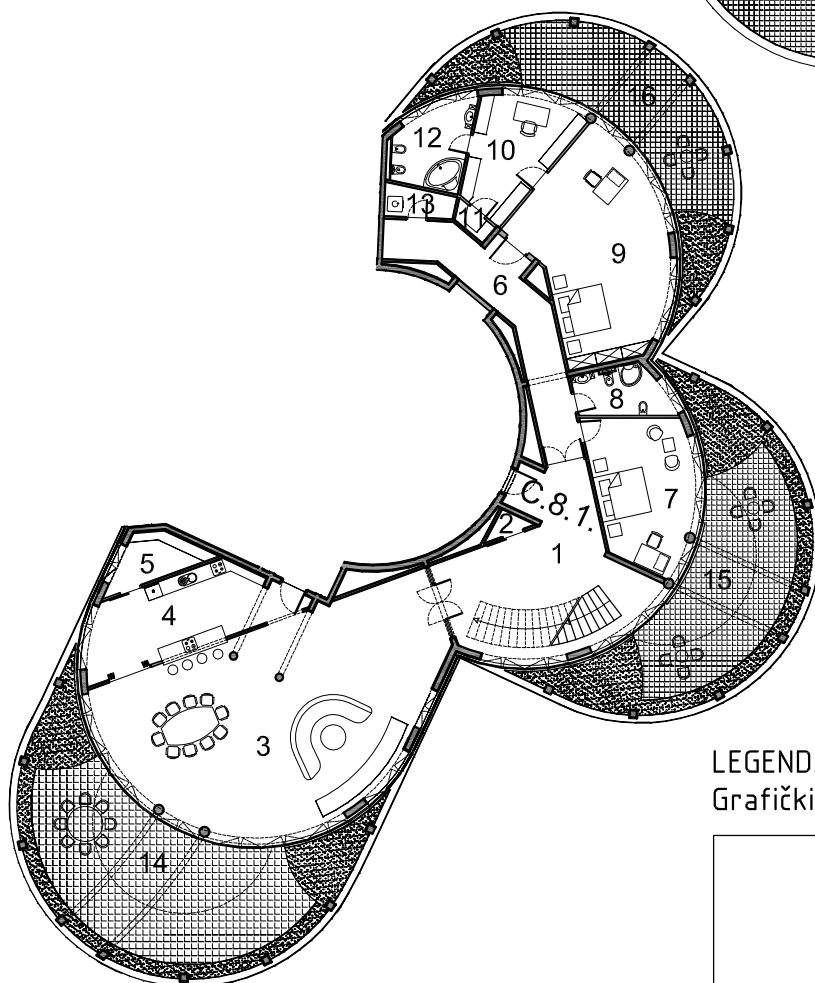
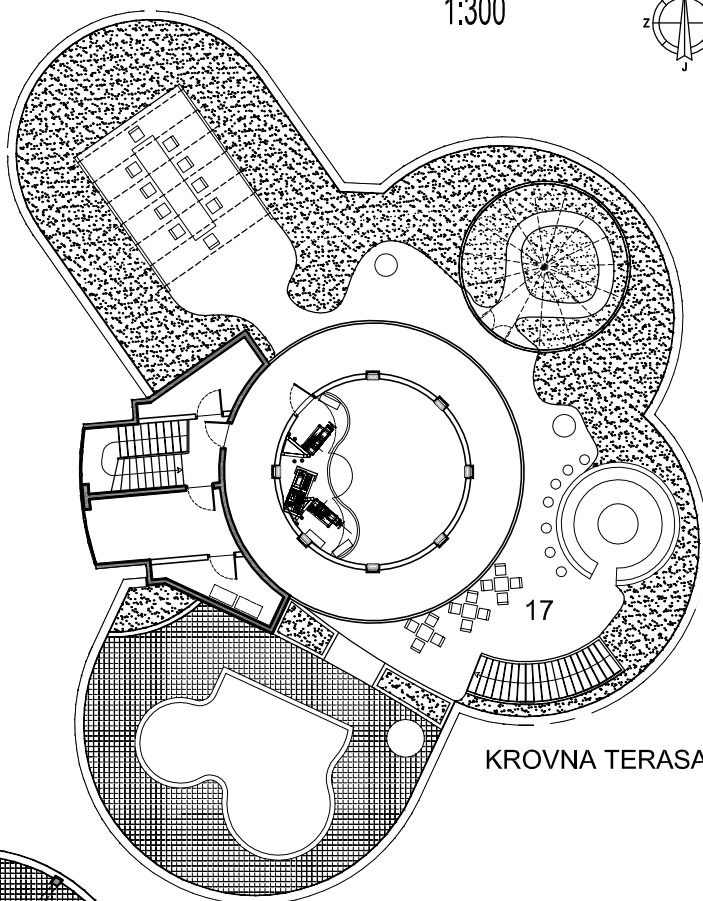
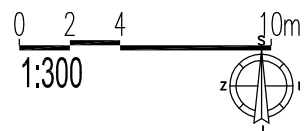


# STAN TIP 58

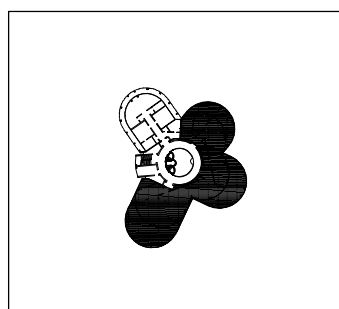
## STAN C.8.1.

| Br.     | Opis prostorije  | Vrsta poda | Koef.       | Površina              |
|---------|------------------|------------|-------------|-----------------------|
| 1       | ULAZNI HODNIK    | parket     | 43,65 x 1   | 43,65 m <sup>2</sup>  |
| 2       | SPREMIŠTE 1      | ker. pl.   | 1,15 x 1    | 1,15 m <sup>2</sup>   |
| 3       | DN. BOR. + BLAG. | parket     | 99,15 x 1   | 99,15 m <sup>2</sup>  |
| 4       | KUHINJA          | ker. pl.   | 23,86 x 1   | 23,86 m <sup>2</sup>  |
| 5       | IZBA             | ker. pl.   | 6,20 x 1    | 6,20 m <sup>2</sup>   |
| 6       | HODNIK           | parket     | 22,16 x 1   | 22,16 m <sup>2</sup>  |
| 7       | SOBA ZA GOSTE    | parket     | 23,57 x 1   | 23,57 m <sup>2</sup>  |
| 8       | KUPAONICA        | ker. pl.   | 7,14 x 1    | 7,14 m <sup>2</sup>   |
| 9       | RODIT. SOBA      | parket     | 42,67 x 1   | 42,67 m <sup>2</sup>  |
| 10      | RADNA SOBA       | parket     | 16,46 x 1   | 16,46 m <sup>2</sup>  |
| 11      | ARHIVA           | parket     | 1,31 x 1    | 1,31 m <sup>2</sup>   |
| 12      | KUP. ROD.        | ker. pl.   | 9,94 x 1    | 9,94 m <sup>2</sup>   |
| 13      | SPREMIŠTE 2      | ker. pl.   | 3,16 x 1    | 3,16 m <sup>2</sup>   |
| 14      | TERASA 1         | kam. pl.   | 77,11x0,25  | 19,28 m <sup>2</sup>  |
| 15      | TERASA 2         | kam. pl.   | 61,88x0,25  | 15,47 m <sup>2</sup>  |
| 16      | TERASA 3         | kam. pl.   | 44,26x0,25  | 11,07 m <sup>2</sup>  |
| 17      | TERASA 4         | kam. pl.   | 524,48x0,25 | 131,12 m <sup>2</sup> |
| Ukupno: |                  |            |             | 477,36 m <sup>2</sup> |



### LEGENDA:

Grafički prikaz



Etaža kom

|             |   |
|-------------|---|
| OSMI KAT    | 1 |
| SEDMI KAT   | - |
| ŠESTI KAT   | - |
| PETI KAT    | - |
| ČETVRTI KAT | - |
| TREĆI KAT   | - |
| DRUGI KAT   | - |
| PRVI KAT    | - |
| PRIZEMLJE   | - |