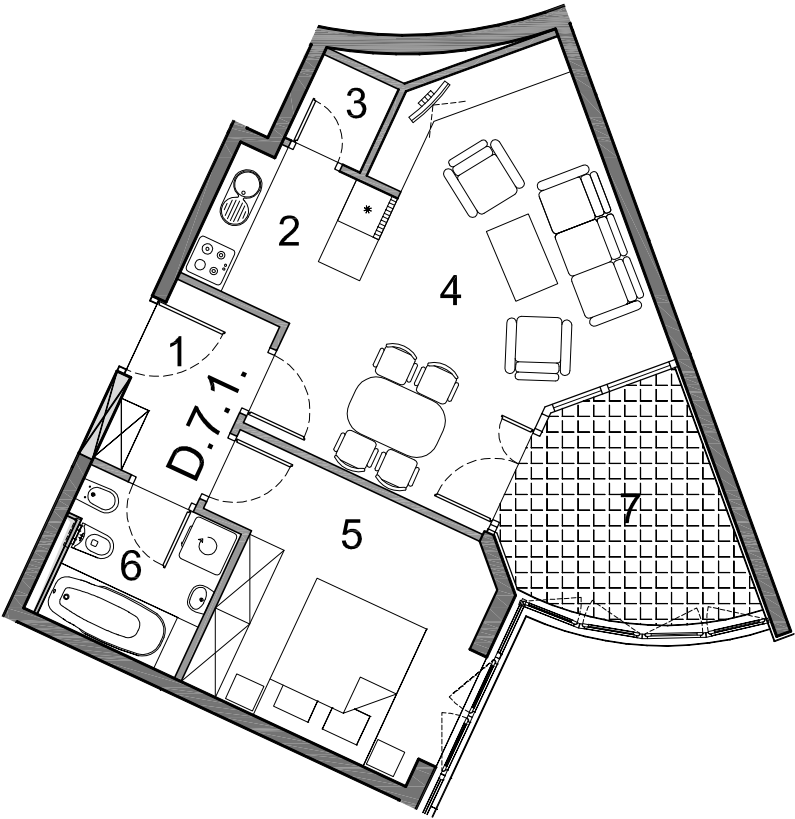
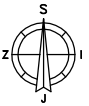
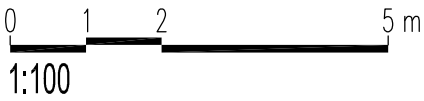


STAN TIP 55

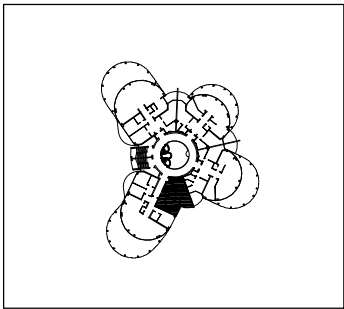


STAN D.7.1.

| Br | Opis prostorije | Vrsta poda | Koef. | Površina |
|---------|------------------|------------|-----------|----------------------|
| 1 | HODNIK | parket | 4,01 x 1 | 4,01 m ² |
| 2 | KUHINJA | ker. pl. | 4,35 x 1 | 4,35 m ² |
| 3 | IZBA | ker. pl. | 1,10 x 1 | 1,10 m ² |
| 4 | DN. BOR. + BLAG. | parket | 19,96 x 1 | 19,96 m ² |
| 5 | RODIT. SOBA | parket | 12,08 x 1 | 12,08 m ² |
| 6 | KUPAONICA | ker. pl. | 4,34 x 1 | 4,34 m ² |
| 7 | LOGGIA | ker. pl. | 8,05x0,75 | 6,04 m ² |
| Ukupno: | | | | 51,88 m ² |

LEGENDA:

Grafički prikaz



| Etaža | kom |
|-------------|-----|
| OSMI KAT | - |
| SEDMI KAT | 1 |
| ŠESTI KAT | - |
| PETI KAT | - |
| ČETVRTI KAT | - |
| TREĆI KAT | - |
| DRUGI KAT | - |
| PRVI KAT | - |
| PRIZEMLJE | - |