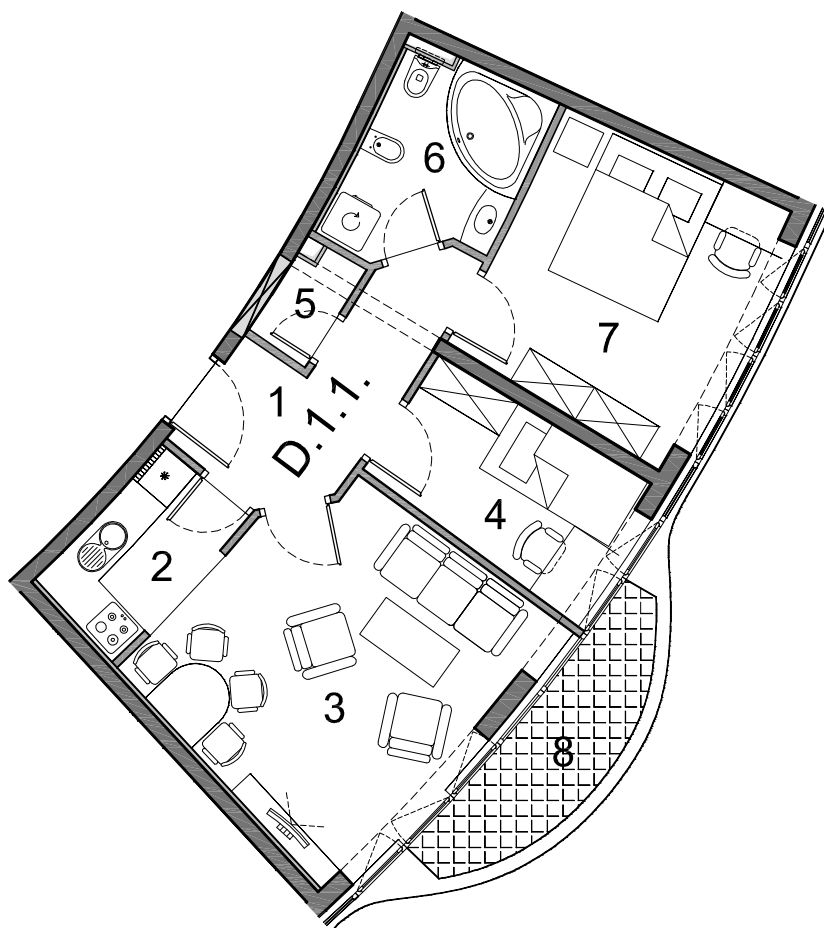
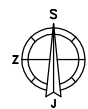


# STAN TIP 25

0 1 2 5 m  
1:100

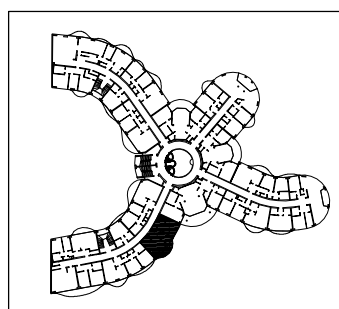


## STAN D.3.1.

| Br      | Opis prostorije  | Vrsta poda | Koef.      | Površina             |
|---------|------------------|------------|------------|----------------------|
| 1       | HODNIK           | parket     | 6,54 x 1   | 6,54 m <sup>2</sup>  |
| 2       | KUHINJA          | ker. pl.   | 3,98 x 1   | 3,98 m <sup>2</sup>  |
| 3       | DN. BOR. + BLAG. | parket     | 17,57 x 1  | 17,57 m <sup>2</sup> |
| 4       | DJEČJA SOBA      | parket     | 6,84 x 1   | 6,84 m <sup>2</sup>  |
| 5       | IZBA             | ker. pl.   | 1,24 x 1   | 1,24 m <sup>2</sup>  |
| 6       | KUPAONICA        | ker. pl.   | 5,52 x 1   | 5,52 m <sup>2</sup>  |
| 7       | RODIT. SOBA      | parket     | 12,82 x 1  | 12,82 m <sup>2</sup> |
| 8       | BALKON           | kam. pl.   | 5,06 x 0,5 | 2,53 m <sup>2</sup>  |
| Ukupno: |                  |            |            | 57,04 m <sup>2</sup> |

## LEGENDA:

Grafički prikaz



| Etaža       | kom |
|-------------|-----|
| OSMI KAT    | -   |
| SEDMI KAT   | -   |
| ŠESTI KAT   | -   |
| PETI KAT    | 1   |
| ČETVRTI KAT | 1   |
| TREĆI KAT   | 1   |
| DRUGI KAT   | 1   |
| PRVI KAT    | 1   |
| PRIZEMLJE   | -   |