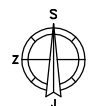


# STAN TIP 14

0 1 2 5 m  
1:100

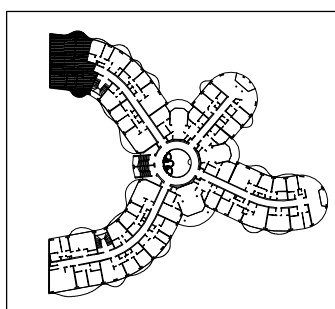


## STAN A.2.3.

| Br      | Opis prostorije  | Vrsta poda | Koef.      | Površina              |
|---------|------------------|------------|------------|-----------------------|
| 1       | UL. HODNIK       | parket     | 13,59 x 1  | 13,59 m <sup>2</sup>  |
| 2       | WC               | ker. pl.   | 2,05 x 1   | 2,05 m <sup>2</sup>   |
| 3       | HODNIK           | parket     | 8,84 x 1   | 8,84 m <sup>2</sup>   |
| 4       | RODIT. SOBA      | parket     | 14,72 x 1  | 14,72 m <sup>2</sup>  |
| 5       | KUP. ROD.        | ker. pl.   | 4,83 x 1   | 4,83 m <sup>2</sup>   |
| 6       | DJEČJA SOBA 1    | parket     | 9,91 x 1   | 9,91 m <sup>2</sup>   |
| 7       | DJEČJA SOBA 2    | parket     | 15,43 x 1  | 15,43 m <sup>2</sup>  |
| 8       | KUPAONICA        | ker. pl.   | 6,01 x 1   | 6,01 m <sup>2</sup>   |
| 9       | DN. BOR. + BLAG. | parket     | 48,60 x 1  | 48,60 m <sup>2</sup>  |
| 10      | KUHINJA          | ker. pl.   | 13,83 x 1  | 13,83 m <sup>2</sup>  |
| 11      | IZBA             | ker. pl.   | 1,75 x 1   | 1,75 m <sup>2</sup>   |
| 12      | BALKON 1         | kam. pl.   | 3,69 x 0,5 | 1,85 m <sup>2</sup>   |
| 13      | BALKON 2         | kam. pl.   | 4,57 x 0,5 | 2,29 m <sup>2</sup>   |
| Ukupno: |                  |            |            | 143,70 m <sup>2</sup> |

## LEGENDA:

Grafički prikaz



| Etaža       | kom |
|-------------|-----|
| OSMI KAT    | -   |
| SEDMI KAT   | -   |
| ŠESTI KAT   | -   |
| PETI KAT    | -   |
| ČETVRTI KAT | -   |
| TREĆI KAT   | 1   |
| DRUGI KAT   | 1   |
| PRVI KAT    | 1   |
| PRIZEMLJE   | -   |